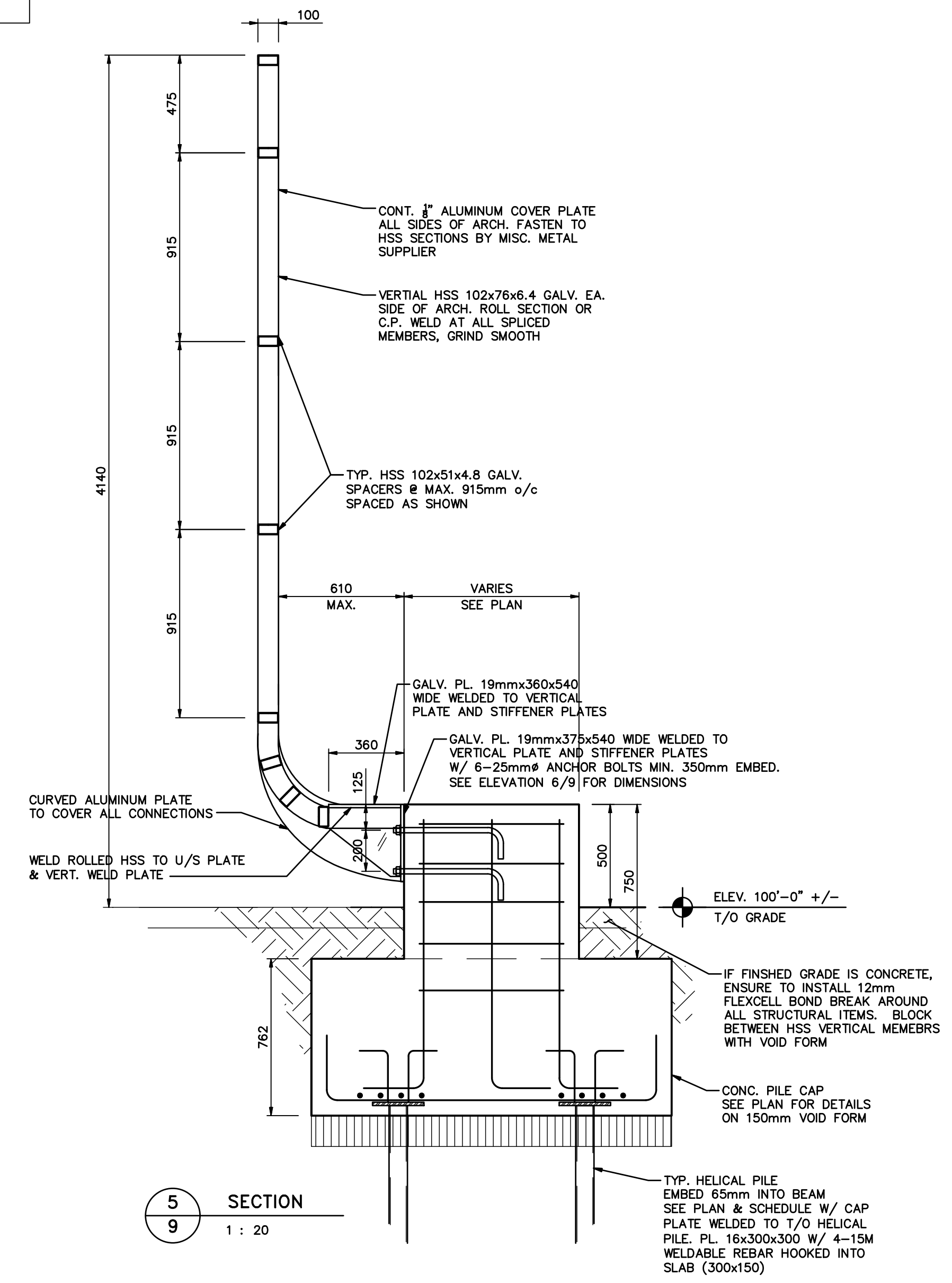
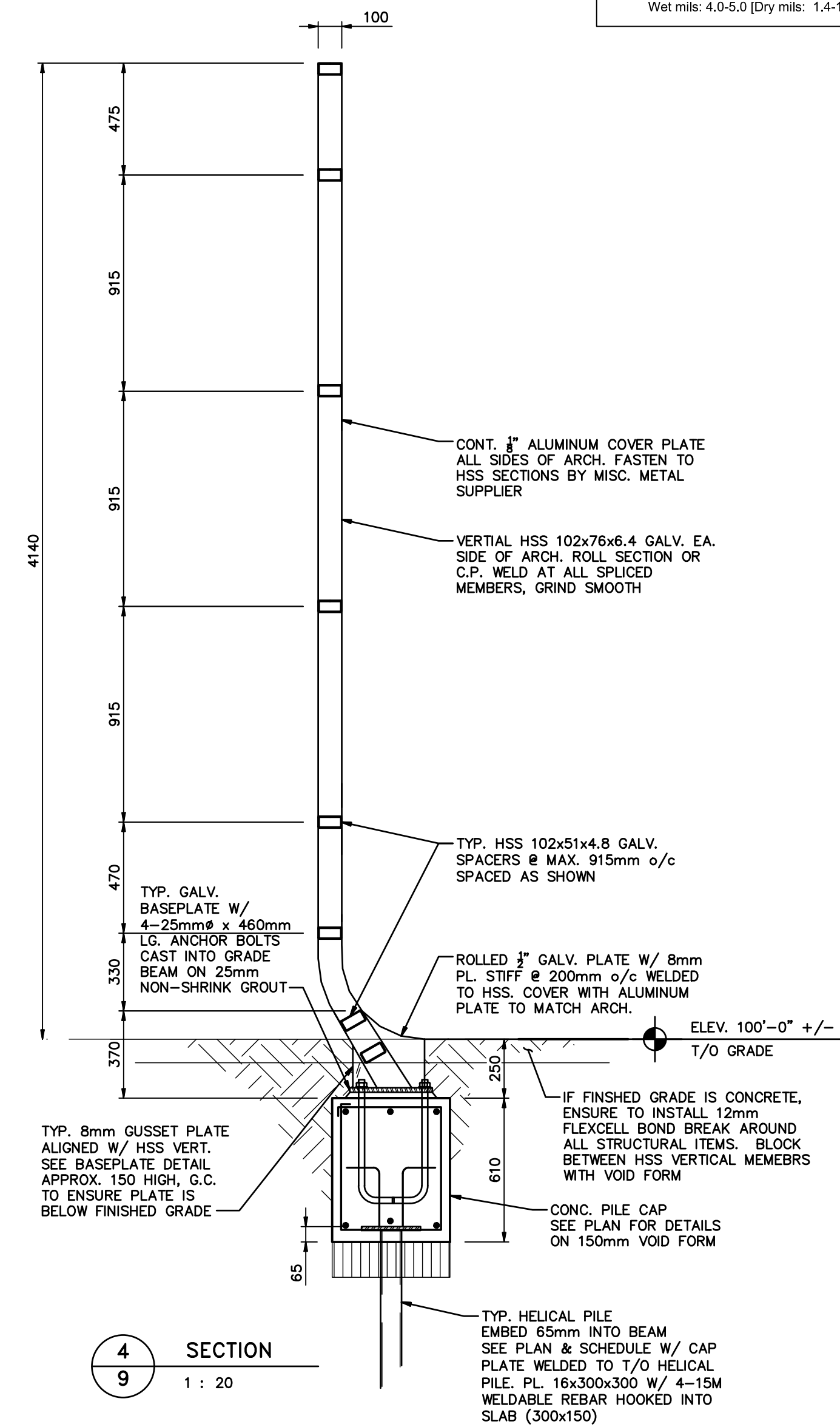


ALL ALUMINUM WRAP OF ARCH ( ALL SIDES ) TO BE PAINTED WITH:

EXTERIOR METAL PAINTING

1. Paint Prep Cleaner: Hi-Lite Solutions Aero-Green 4110 - Paint Prep Cleaner.
2. Primer: Sherwin Williams Pro-Cryl Universal Primer self cross-linking acrylic primer. 1 ct. Wet mls: 5.0 - 10.0 [Dry mls: 1.8-3.6].
3. Top Coat: Sherwin Williams Pro-Cryl Waterbased Alkyd Urethane Enamel. Exterior grade enamel with a urethane modified alkyd resin system. 2 cts. @ Wet mls: 4.0-5.0 [Dry mls: 1.4-1.7] per coat. Black, Semi-Gloss.

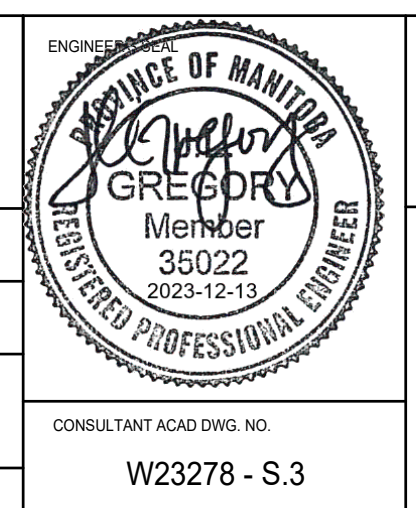


ENGINEERS GEOSCIENTISTS MANITOBA  
Certificate of Authorization  
Wolfrom Engineering Ltd.  
No. 1166

**WOLFROM**  
ENGINEERING LTD  
WWW.WOLFROMENG.COM

LOCATIONS APPROVED UNDERGROUND STRUCTURES		G.B.M. ELEV.
SIGNED BY:	DATE	
SUPV UG STRUCTURES		
LOCATION OF UNDERGROUND STRUCTURES AS SHOWN ARE BASED ON THE BEST INFORMATION AVAILABLE BUT NO GUARANTEE IS GIVEN THAT ALL EXISTING UTILITIES ARE SHOWN OR THAT THE GIVEN LOCATIONS ARE EXACT CONFIRMATION OF EXISTENCE AND EXACT LOCATION OF ALL SERVICES MUST BE OBTAINED FROM THE INDIVIDUAL UTILITIES BEFORE PROCEEDING		
NO.	ISSUED FOR CONSTRUCTION	12-13-2023
NO.	REVISIONS	DATE BY

<b>HTFC</b> PLANNING & DESIGN 300-111 Bernhart Ave. Winnipeg, MB R2B 0R3 PH: 204-944-9987	
DESIGNED BY: JLG	CHECKED BY: JLG
DRAWN BY: JLG	APPROVED BY: JLG
HOR. SCALE: AS NOTED	RELEASED FOR CONSTRUCTION
VERTICAL SCALE: AS NOTED	
DATE: 12-11-2023	DATE: -



THE CITY OF WINNIPEG  
PLANNING, PROPERTY AND DEVELOPMENT  
PLANNING AND URBAN DESIGN DIVISION

Winnipeg

EAST EXCHANGE - OSEREDOK PARK & WATERFRONT LETTERS

ARCH FOUNDATION PLAN SECTIONS & DETAILS

CITY DRAWING NUMBER: SHEET 9 OF 9  
BID NO. 1035-2023

CONSULTANT ACDW DWG. NO. W23278 - S.3

NOTE: These design documents are prepared solely for the use by the party with whom the design professional has entered into a contract and there are no representations or warranties made by the design professional to any party with whom the design professional has not entered into a contract.